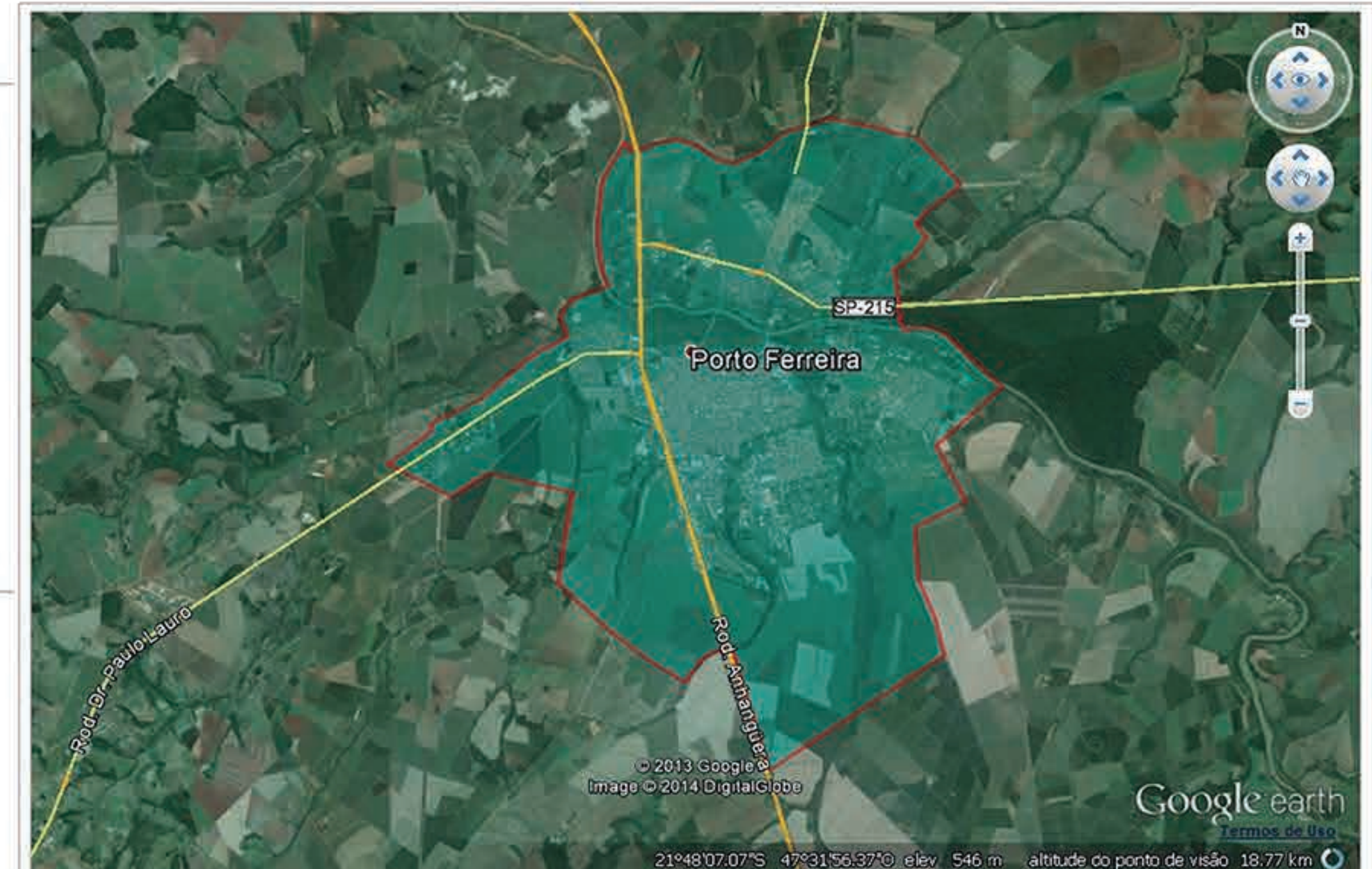




Perímetro Urbano de Porto Ferreira									
De	Para	Coord. N(Y)	Coord. E(X)	Azimute	Distância	Latitude	Longitude		
01	02	7.577.032,52	243.622,17	341°39'01"	2.026,34 m	21°53'31,97"S	47°28'52,64"W		
02	03	7.577.032,52	243.622,17	258°45'41"	92,82 m	21°53'25,51"S	47°28'56,07"W		
03	04	7.576.979,97	243.417,38	253°08'46"	118,86 m	21°53'33,57"S	47°29'00,00"W		
04	05	7.576.894,94	243.259,64	241°40'23"	179,20 m	21°53'36,25"S	47°29'05,54"W		
05	06	7.576.854,62	243.183,32	242°09'09"	86,32 m	21°53'37,52"S	47°29'08,22"W		
06	07	7.576.472,09	242.898,00	216°43'06"	477,22 m	21°53'49,89"S	47°29'16,37"W		
07	08	7.576.764,24	242.898,00	300°00'19"	584,21 m	21°53'40,04"S	47°29'36,82"W		
08	09	7.577.201,21	241.764,89	304°51'54"	764,41 m	21°53'25,51"S	47°29'57,41"W		
09	10	7.577.993,43	240.862,72	311°17'14"	1.200,63 m	21°52'59,29"S	47°30'28,77"W		
10	11	7.579.419,17	241.055,82	8°06'27"	1.440,13 m	21°52'13,07"S	47°30'20,49"W		
11	12	7.579.705,72	239.730,24	282°08'33"	1.365,97 m	21°52'30,59"S	47°31'18,82"W		
12	13	7.579.321,92	238.146,77	236°39'49"	898,38 m	21°52'18,21"S	47°31'27,35"W		
13	14	7.579.821,17	238.156,33	296°45'05"	1.109,15 m	21°51'58,46"S	47°32'14,54"W		
14	15	7.580.338,21	238.814,36	51°50'31"	836,86 m	21°51'42,01"S	47°31'38,34"W		
15	16	7.580.477,42	238.839,66	10°18'02"	141,49 m	21°51'37,50"S	47°31'37,38"W		
16	17	7.580.855,79	239.596,49	63°29'53"	847,93 m	21°51'25,61"S	47°31'10,75"W		
17	18	7.581.348,55	240.146,34	48°01'49"	736,85 m	21°51'19,89"S	47°30'51,40"W		
18	19	7.581.633,65	240.511,73	52°02'11"	463,46 m	21°51'10,82"S	47°30'38,52"W		
19	20	7.581.777,21	240.823,12	65°14'56"	342,89 m	21°50'56,32"S	47°30'27,60"W		
20	21	7.581.875,52	240.944,49	50°59'33"	156,19 m	21°50'53,19"S	47°30'23,32"W		
21	22	7.582.203,62	240.814,74	339°25'24"	352,82 m	21°50'42,46"S	47°30'27,65"W		
22	23	7.582.475,32	241.038,73	39°30'08"	352,13 m	21°50'33,75"S	47°30'19,70"W		
23	24	7.582.607,41	241.440,26	71°47'26"	422,70 m	21°50'29,67"S	47°30'05,65"W		
24	25	7.582.677,83	241.588,23	64°33'00"	163,87 m	21°50'27,46"S	47°30'04,49"W		
25	26	7.582.872,77	241.501,45	336°00'11"	213,38 m	21°50'21,08"S	47°30'03,37"W		
26	27	7.583.167,36	241.430,58	349°28'24"	302,99 m	21°50'14,17"S	47°30'05,97"W		
27	28	7.583.489,98	241.398,90	354°23'30"	324,17 m	21°50'07,97"S	47°30'06,99"W		
28	29	7.583.773,88	241.408,37	1°54'38"	284,06 m	21°49'51,75"S	47°30'06,10"W		
29	30	7.584.281,10	241.448,98	4°34'39"	506,84 m	21°49'35,29"S	47°30'04,40"W		
30	31	7.584.484,22	241.534,60	21°53'15"	229,68 m	21°49'28,41"S	47°30'13,07"W		
31	32	7.584.742,45	241.897,81	33°19'29"	297,08 m	21°49'20,43"S	47°29'55,48"W		
32	33	7.584.945,04	241.798,26	26°22'25"	226,13 m	21°49'13,90"S	47°29'51,87"W		
33	34	7.584.790,92	241.915,99	142°37'28"	193,94 m	21°49'18,97"S	47°29'47,86"W		
34	35	7.584.825,28	242.004,22	69°43'20"	94,68 m	21°49'17,90"S	47°29'44,77"W		
35	36	7.584.943,24	242.391,06	81°55'31"	128,57 m	21°49'17,32"S	47°29'40,33"W		
36	37	7.584.908,12	242.207,51	50°26'16"	98,57 m	21°49'15,38"S	47°29'37,65"W		
37	38	7.584.987,24	242.660,80	77°04'06"	362,48 m	21°49'12,93"S	47°29'25,31"W		
38	39	7.584.985,47	242.698,76	90°44'06"	137,97 m	21°49'13,06"S	47°29'20,51"W		
39	40	7.584.917,07	242.922,56	106°59'41"	234,02 m	21°49'15,40"S	47°29'12,76"W		
40	41	7.584.688,91	243.334,89	121°02'30"	491,25 m	21°49'23,68"S	47°28'58,55"W		
41	42	7.584.631,03	243.562,51	99°26'54"	230,75 m	21°49'25,03"S	47°28'50,65"W		
42	43	7.584.800,48	243.909,43	63°58'02"	386,09 m	21°49'19,71"S	47°28'38,48"W		
43	44	7.584.945,99	244.145,08	58°18'19"	276,96 m	21°49'15,10"S	47°28'30,20"W		
44	45	7.585.096,80	244.280,30	41°52'49"	202,55 m	21°49'10,27"S	47°28'25,41"W		
45	46	7.585.168,78	244.450,98	67°08'01"	185,24 m	21°49'08,02"S	47°28'19,43"W		
46	47	7.585.228,64	244.690,82	75°59'10"	247,20 m	21°49'06,20"S	47°28'11,05"W		
47	48	7.585.372,36	245.042,67	67°46'53"	380,07 m	21°49'11,71"S	47°27'58,73"W		
48	49	7.585.081,73	246.436,25	101°46'49"	1.423,56 m	21°49'11,89"S	47°27'10,39"W		
49	50	7.584.345,27	247.129,83	136°43'03"	1.011,85 m	21°49'36,17"S	47°26'46,86"W		
50	51	7.583.947,64	246.605,74	232°48'44"	657,86 m	21°49'48,82"S	47°27'05,12"W		
51	52	7.583.742,14	246.435,75	219°35'51"	266,70 m	21°49'55,41"S	47°27'11,15"W		
52	53	7.583.508,70	246.593,86	145°53'24"	281,95 m	21°50'08,08"S	47°27'05,78"W		
53	54	7.583.270,00	246.427,00	214°57'18"	291,24 m	21°50'10,75"S	47°27'11,72"W		
54	55	7.583.130,00	246.271,00	239°05'39"	209,81 m	21°50'15,22"S	47°27'17,22"W		
55	56	7.583.015,90	246.113,50	234°04'44"	194,49 m	21°50'18,84"S	47°27'22,77"W		
56	57	7.582.480,16	246.204,11	170°44'23"	563,08 m	21°50'36,95"S	47°27'19,92"W		
57	58	7.582.373,83	246.163,79	205°02'05"	95,28 m	21°50'39,73"S	47°27'21,38"W		
58	59	7.582.331,81	246.208,64	133°08'03"	61,46 m	21°50'41,12"S	47°27'19,84"W		
59	60	7.582.285,85	246.246,78	149°57'44"	76,19 m	21°50'43,32"S	47°27'18,55"W		
60	61	7.582.206,58	246.194,54	221°23'33"	79,01 m	21°50'45,18"S	47°27'20,40"W		
61	62	7.582.164,68	246.240,86	132°07'54"	62,46 m	21°50'46,57"S	47°27'18,81"W		
62	63	7.582.066,10	246.301,38	148°27'13"	115,67 m	21°50'49,80"S	47°27'16,76"W		
63	64	7.582.105,46	246.588,71	82°00'19"	290,15 m	21°50'46,64"S	47°27'07,33"W		
64	65	7.582.069,65	246.762,24	101°58'35"	177,39 m	21°50'48,91"S	47°27'07,11"W		
65	66	7.582.011,91	246.933,35	108°38'48"	180,59 m	21°50'51,89"S	47°26'54,79"W		
66	67	7.581.189,43	247.850,32	131°53'26"	1.231,79 m	21°51'19,09"S	47°26'23,33"W		
67	68	7.580.250,31	246.809,89	227°55'47"	1.401,59 m	21°51'49,07"S	47°27'00,06"W		
68	69	7.579.375,96	247.295,01	150°59'47"	1.000,00 m	21°52'17,74"S	47°26'43,66"W		
69	70	7.578.960,58	246.499,42	242°26'07"	897,46 m	21°52'00,82"S	47°27'11,59"W		
70	71	7.578.519,00	246.535,00	175°23'35"	442,99 m	21°52'45,19"S	47°27'10,69"W		
71	72	7.577.553,00	246.826,00	155°22'35"	607,22 m	21°53'16,73"S	47°27'00,93"W		
72	73	7.578.968,00	246.889,46	164°51'51"	618,36 m	21°53'56,21"S	47°26'55,84"W		
73	01	7.575.108,06	244.262,96	235°52'14"	3.293,78 m	21°54'34,84"S	47°28'31,61"W		

Área: 52.534,182,13 m²
 5.253,4182 ha
 2.170,8340 Alqs
 36.936,96 m



DECLINAÇÃO MAGNÉTICA 1983 E CONVERGÊNCIA MERIDIANA DO CENTRO DA FOLHA

A DECLINAÇÃO MAGNÉTICA CRESCE 9" ANUALMENTE. Usar exclusivamente os dados numéricos.



- MUNICÍPIOS VIZINHOS
-
- SANTA RITA DO PASSA-QUATRO
 - SANTA CRUZ DAS PALMEIRAS
 - PIRASSUNUNGA
 - DESCALVADO

LOCALIZAÇÃO NA CARTA DO BRASIL

FOLHA DE DESCALVADO FOLHA DE PIRASSUNUNGA

Latitude S 21°51'00"
 Longitude W Gr. 47°28'00"
 Morro Alto = 796,00 metros
 Ilho dos Patos = 645,00 metros

PREFEITURA MUNICIPAL DE PORTO FERREIRA
 DEPARTAMENTO DE OBRAS E SERVIÇOS MUNICIPAIS DIVISÃO DE PLANEJAMENTO URBANO

Mapa do Perímetro Urbano do Município de Porto Ferreira

PLANO DIRETOR	PORTO FERREIRA	Secretaria de Infraestrutura, Obras e Meio Ambiente DNPJ nº45.339.363/0001-94
Escala: 1 : 15.000	Data de atualização: 12/02/2014	Av. João Martins do Silveira Sobr., 853 Jardim Primavera Porto Ferreira - SP Cep. 13.560-000 Fone: (19) 3389-3600
Desenhista: Giovanna F. Baccarin Dissordi Engenheira Agrônoma CREA 508462421 SP		Prefeitura Municipal de Porto Ferreira Secretaria de Infraestrutura, Obras e Meio Ambiente